

Visit Bartlesville OKLAHOMA

2026 VISITOR GUIDE



Travel
OKLAHOMA
TravelOK.com



VisitBartlesville.com

300 SE Adams Blvd. Bartlesville, OK 74003 918-336-8709

TOWER CENTER ARTS DISTRICT

Tower Center Arts District brings together Bartlesville's downtown arts and cultural offerings by centering and promoting activities around The Center, Bartlesville Public Library, and Unity Square. These entities, which promote performing arts; visual arts, and literary arts, are united by a beautiful urban green space.

TOWER CENTER AT UNITY SQ

GET TO KNOW US

- Visit US
- Rent US
- US Events

Unitysquareville.com
918-337-2787

THE CENTER

FOR ARTS, EVENTS, & COMMUNITY

THE PERFECT VENUE

- See A Show
- Rent Event Space
- Connect With Friends



Bartlesvillecenter.com
918-337-2787



Welcome to Bartlesville!

Bartlesville, located in the northeast corner of Oklahoma, invites you to explore history, architecture, culture, and hospitality. From **Frank Lloyd Wright's Price Tower** to the beautiful **Osage Hills**, find gems like the unique **Woolaroc Museum and Wildlife Preserve**. Understand the energy and history of the American West by visiting the **Frank Phillips Home** or the **Nellie Johnstone No. 1**. Learn more of the story at places like the **Bartlesville Area History Museum** or the **Tom Mix Museum** and the **Dewey Hotel & Museum** located in Dewey.

The attractions and events of Bartlesville and Dewey represent a story of human spirit and perseverance. The exceptional museums, outstanding architecture, and one-of-a-kind cultural events make for a community full of charm and class. Fill your visit with historic tours, family friendly attractions, and fun events. Or, make the most of a business trip at one of our unique restaurants, beautiful parks, or friendly retail shops. Area residents help roll out the red carpet for visitors, no matter their reason for staying.

Children of all ages love to explore the **AT&SF Steam Locomotive No. 940**, **Bruce Goff's Sooner Park Play Tower**, or the magical **Kiddie Park**. Outdoor enthusiasts can find adventure at the **Pathfinder Parkway Trail**, **Lee Lake**, **Frontier and Sooner Pools**, **Bartlesville Trails at Lake Hudson**, or **Osage Hills State Park**, located just 14 miles west of downtown Bartlesville.

Enhance your stay by attending one of our many festivals and take in the food, music, and culture of the area. Highlights of the year include **Sunfest**, **OKM Music Festival**, **Kidsfest at Woolaroc** and **Gathering at the Roc**.

Bartlesville has played host to oil barons, Oklahoma legends, and well-known celebrities. However, the most important visitor is the one that hasn't yet arrived. Let us serve as your next weekend getaway, family reunion destination, or convention location. **Visit Bartlesville** is committed to help you create many happy memories of the people and places of Bartlesville and the surrounding area.

We look forward to being your warm and welcoming host.

Maria Swindell Gus, Executive Director
Visit Bartlesville 300 SE Adams Blvd., Bartlesville, OK 74003
918-336-8709 • VisitBartlesville.com



SCAN HERE TO CONNECT!

Interactive Guide & Map
Things to Do, Know and See
Events and Lodging



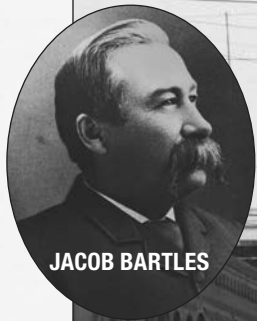
A NATION OF ADVENTURE

Native Culture, Natural Beauty

Experience authentic Native art, inspiring stories, rolling hills and sparkling lakes. Spend quality time in Cherokee Nation.

PLAN YOUR ADVENTURE AT
[VISITCHEROKEENATION.COM](https://www.visitCherokeeNation.com)





JACOB BARTLES



All historical photos courtesy Bartlesville Area History Museum.

Our Story

Humble Beginning...

Oklahoma's commercial oil and gas industry was born in 1897 in Bartlesville, Indian Territory, when the **Cudahy No. 1 "Nellie Johnstone"** oil well came in a gusher.

Investors **George Keeler** and **William Johnstone** came to this area of the **Cherokee, Delaware** and **Osage** in the early 1870s to engage in the lucrative fur trade. Other traders included **Nelson Carr**, who built a gristmill on the north bank of the Caney River in 1870, and **Jake Bartles**, who bought the mill and added a flour mill and general store.

In the early 1880s, Johnstone and Keeler went to work for Bartles and in 1884 they opened a competing store on the river's south bank.

Keeler and Johnstone wanted to bring the AT&SF Railroad to their side of the river and when Keeler saw oil scum on the surface of the Sand Creek in 1875, the seeds were planted. In 1896, after lobbying the Cherokees and the Department of Interior, they secured an oil lease.

They were also campaigning to win approval to charter a town site near their store. **Bartlesville was incorporated on January 15, 1897**, as the Cudahy Oil Company began rigging up their well site on the edge of the new town. On March 25, 1897, at a depth of 1,303 feet, the well was shot with nitroglycerine, gushed to life and Bartlesville – the energy city – was born.

The Boom

In 1899, the AT&SF Railroad completed its depot on the south bank, the first oil trains departed for Kansas refineries, and Jake Bartles moved his store north to found the town of Dewey, named after Admiral George Dewey, whose victory at Manila Bay was current news.

The prospect of oil was a magnet for oilmen, lease hounds, drillers and roustabouts. By 1904 more than 100 wells had been drilled in the Bartlesville area and pipelines laid to the Coffeyville, Kansas refinery. In 1907, the city celebrated statehood as the home of over 120 oil companies.

Petroleum Pioneers

Young engineer **H.V. Foster** arrived in 1902 to manage his family's blanket oil lease on all 1.5 million acres of the Osage Lands. Soon he divided the lease into smaller acreages and sublet these to other drillers, creating the Indian Territory Illuminating Oil Company.

In 1930, Edward Buehler Delk designed Foster's **La Quinta Mansion**, now the home of Oklahoma Wesleyan University. Foster sold ITIO to Cities Services Oil Company in 1941 for \$70 million, making Cities Service the 10th largest oil company in the United States.

Other legendary pioneers got their start subleasing from ITIO. Attorney **George Getty** visited Bartlesville in 1903 and sublet 1,100 acres for \$500. Young son **J. Paul Getty** bought 100 shares



in his father's Minnehoma Oil Company for \$5 and their first well hit pay dirt. The Getty family stayed in Bartlesville for extended periods of time and J. Paul Getty spent summers as a roustabout throughout his teenage years.

Banker and barber **Frank Phillips** arrived in Bartlesville in 1904 and started Citizen Bank and Trust. Brother L.E. Phillips joined him and they drilled on a sublease north of town. Their 4th well, the Anna Anderson, came in a gusher and was followed by 80 straight producing wells.

Frank built his Bartlesville mansion, now the **Frank Phillips Home**, in 1909. When oil skyrocketed during World War I, the brothers acquired another sub-lease, brought in a gusher, which produced 100 barrels per day, and formed **Phillips Petroleum Company** in 1917 with 27 employees.

Innovation

Utility magnate **H.L. Doherty** came to Bartlesville in 1912 to organize the Empire Gas and Fuel Company, which opened a research facility in 1916. Doherty and the Chamber of Commerce secured a U.S. Bureau of Mines Petroleum Research Center for Bartlesville in 1918. Empire Gas would later become **Cities Service Oil Company**.

Phillips Petroleum added its own research center in 1925, the same year Frank established his **Woolaroc Ranch** retreat. Phillips successfully promoted its new aviation fuel in 1927 when the Woolaroc plane, piloted by Art Goebel, won the historic Dole Pineapple Race.

Phillips attracted Russian immigrant Armais Arutunoff to Bartlesville in 1928. Arutunoff invented an electric submersible motor that could pump oil from deep inside wells. He founded the REDA Pump Company in 1930, which later merged with TRW. The Bartlesville plant is now owned and operated by **Schlumberger**.

In 1956 Phillips Petroleum opened the world's first commercial plastics technical center, which pioneered a multitude of uses for Phillips' innovative plastic such as Marlex and K-Resin. The center is now a division of **Chevron Phillips Chemical Company**.

Also in 1956, Bartlesville saw the completion of **Frank Lloyd Wright's** only skyscraper, the **Price Tower**. The building was the corporate headquarters of the **H.C. Price Company**, one of the world's leading pipeline construction firms.

Phillips Petroleum and **Conoco** merged in 2002 to become **ConocoPhillips**. ConocoPhillips repositioned as **ConocoPhillips** and **Phillips 66** in 2012. Bartlesville now serves as the global services center for both corporations, as well as the research arm of Phillips 66.

Energy industry products and services brought international giant ABB to Bartlesville in 1999. Service and Technology Corporation opened in 1986. They operate in a city that still boasts a small, but thriving, independent oil and gas industry.

Today

At the turn of the 20th century Bartlesville boomed with wildcatters and oil pioneers. Bartlesville residents of the 21st century work in the energy industry, health care, education and so much more. Many of these modern day pioneers can be seen in downtown restaurants and bars to enjoy varied cuisine and hear live music that is uniquely Oklahoma. While Bartlesville honors the past, we also embrace the future and love to celebrate.

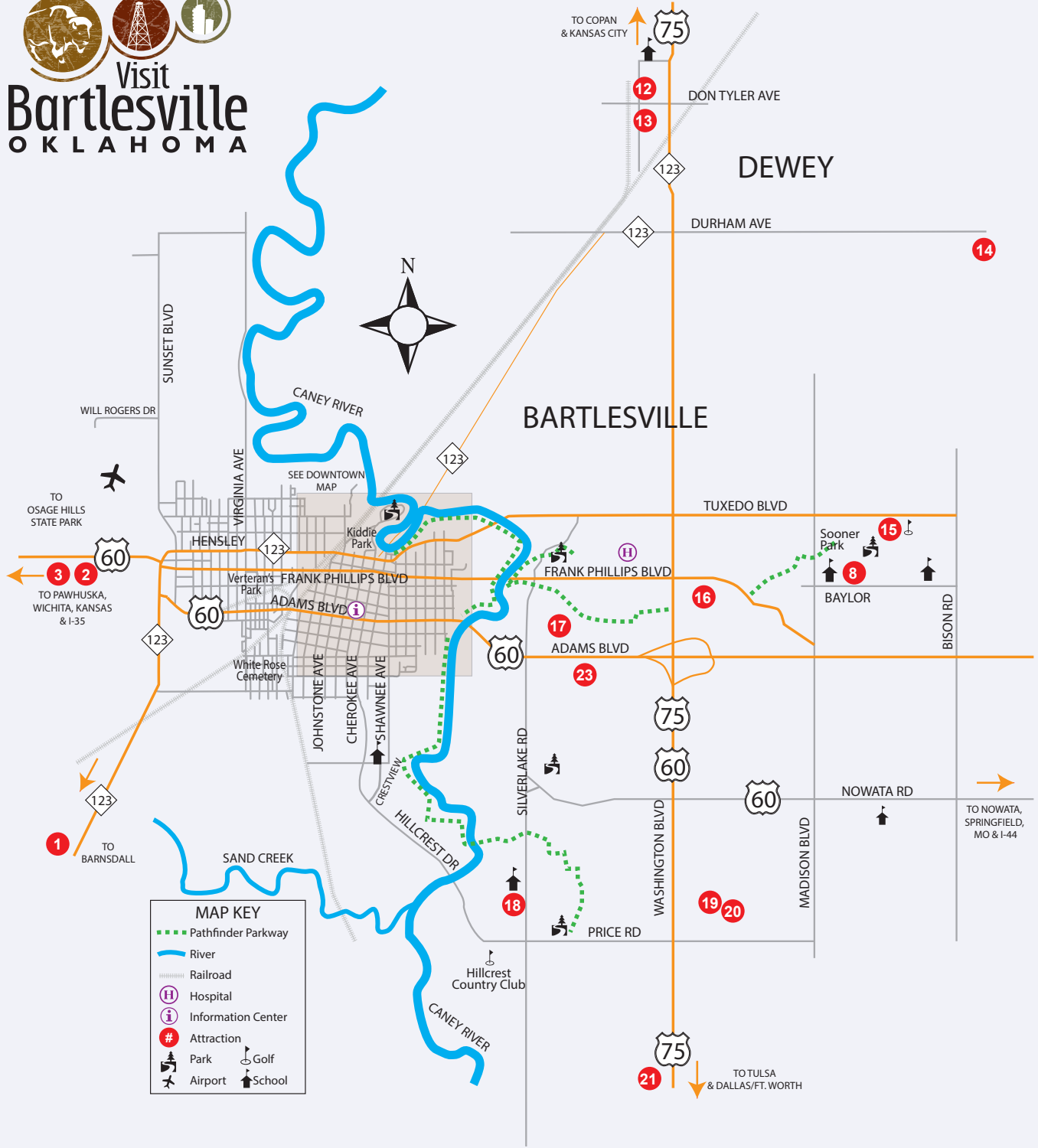


Visitors and residents alike enjoy **OKM Music Festival**, **Sunfest** and the **Kiddie Park**. Sports fans can watch **American Legion Baseball** at **Doenges Memorial Stadium**, **Bartlesville Gymnastics Club** and **Bartlesville Splash Club** at **Adams Gymnasium**, and the competitive sports at **Oklahoma Wesleyan University**. **Bartlesville Community Center** presents the **Broadway in Bartlesville** series and also hosts the **Bartlesville Symphony Orchestra**, **Bartlesville Chorale** and **Bartlesville Civic Ballet**. **Theater Bartlesville** is also nearby.

Our pioneering ways live on and Bartlesville remains an energy city. That energy means there is always something happening here. Come enjoy our fun, family-friendly atmosphere and discover history. Whether you're planning a family vacation, special event, athletic competition or business retreat, you'll find everything you need. Our affordability, hospitality and accessible location make for a memorable experience!



Travel
OKLAHOMA
TravelOK.com





Tower Center at Unity Square

Looking for a great outdoor place the entire family can go to be happy, sing, dance and enjoy? Then you have found exactly what you're looking for at the Tower Center at Unity Square. Unity Square is a pet-friendly outdoor space that offers beautiful landscaping; art sculptures; water features; public musical instruments designed into the landscape; an outdoor concert area; and much more!

Located in the heart of the Tower Center Arts District, Unity Square is within walking distance of several great restaurants and hotels, as well as unique entertainment options such as OKM Music, the Price Tower Arts Center, Theater Bartlesville, the Bartlesville Public Library, the Phillips 66 Museum, Frank Phillips Home, and the Bartlesville Community Center. Go to visitbartlesville.com for a full list of attractions and activities in the Bartlesville area.

Our Taliesin-designed open-air venue includes a few benches, but we encourage individuals attending events or visiting the park to bring lawn chairs or a blanket for seating. All seating is outdoor, so bring along a jacket on cooler days.

Pack a sack lunch or visit one of the restaurants within walking distance of the park. Some events will include on-site food trucks. Visit our Facebook page for details.

300 SE Adams Blvd (between Price Tower and Bartlesville Community Center)
918-337-2787
UnitySquareville.com



The Center for Arts, Events, and Community

The Center for Arts, Events, and Community, designed by William Wesley Peters, formerly the chief architect of Taliesin West - The Frank Lloyd Wright Foundation, has an acoustically superb performance hall that seats over 1,700. The hall is the main focus The Center and is considered to be one of the finest concert halls in the country. Also found within is one of the world's largest cloisonné artworks, a mural that is 25-feet long which depicts a stylized northeastern Oklahoma countryside. The Center for Arts, Events, and Community is a wonderful design from the Frank Lloyd Wright Foundation and a must-see for any architecture fan.

Mon-Fri 9am-5pm; Closed Holidays
Saturday & Sunday tours offered by appointment only
Free Admission, donations are welcome • Handicap accessible

300 SE Adams Blvd
918-337-2787
Bartlesvillecenter.com



Frank Lloyd Wright's Price Tower



1956 Price Tower - Frank Lloyd Wright's only built skyscraper - rises 19 stories in downtown Bartlesville and offers an exceptional building for architectural enthusiasts and curious visitors. Currently, Price Tower is closed to visitors, but guests can experience an outside tour by contacting Visit Bartlesville directly. Listed on the National Register of Historic Places, it has received the American Institute of Architects 25-year Award.

To take a tour of not only Price Tower but also the Taliesin designed Center for Arts, Events, and Community, please contact Visit Bartlesville. These free tours are given on Tuesdays at 2 pm and Saturdays at 11 am.

Please keep updated on Price Tower, tours, and new information at www.visitbartlesville.com.



Travel
OKLAHOMA
TravelOK.com



Bruce Goff Play Tower located in Sooner Park 420 SE Madison

Photo by Andy Dossett

Buffalo Art

Find over 30 beautifully designed and painted buffalo in many locations around the Bartlesville area. For more information about the Buffalo go to visitbartlesville.com. Have a great time exploring these works of art!





BWA

BARTLESVILLEWEDDINGS.COM

BARTLESVILLE WEDDING ASSOCIATION



ALL YOU NEED FOR PLANNING
YOUR PERFECT WEDDING
IN BARTLESVILLE, OK



Oklahoma's **BIGGEST** Outdoor Picnic!



Experience three days of live music, local flavor, and endless family-friendly fun at Bartlesville's premier festival. Wander the bustling Artisan Marketplace, enjoy great food, explore unique vendors and nonprofit booths, and take in entertainment on multiple stages all weekend long. Kids will love the hands-on activities, games, and outdoor movie nights, and Saturday brings our popular Car Show, a favorite for all ages. SunFest is the perfect place to make memories with family and friends. Join us May 29-31 and celebrate summer together at Oklahoma's biggest outdoor picnic!



The First Weekend after Memorial Day

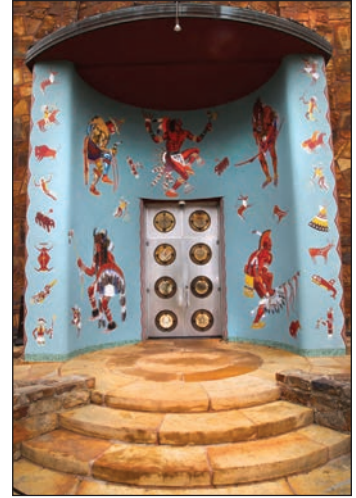
Find us on Facebook!



<https://www.bartlesvillesunfest.org/>

Woolaroc Museum and Wildlife Preserve

Woolaroc, country estate of oil baron Frank Phillips, houses one of the most outstanding western art collections in the world and includes works by Frederic Remington, Charles M. Russell, and many others. Named for the woods, lakes and rocks that are indigenous to the Osage area, Woolaroc is more than just a museum. Bison, elk, longhorns and many other



animals greet travelers on their 2 mile journey to the museum through part of Woolaroc's 3700 acre wildlife preserve. Guests can view the historic Lodge home, built in 1925 where history was being made in the 30s and 40s. Seasonal events, educational programs, petting barn, western playground and more are what make Woolaroc an outstanding regional attraction you won't want to miss!

Wed-Sun 10am-5pm

Memorial Day thru Labor Day Tue-Sun 10am-5pm

(Open Memorial Day and Labor Day)

Closed Thanksgiving and Christmas

Ages 13-64 \$19, Senior 65+ & Military \$17,

Children 12 & under Free, Members of Woolaroc Free.

Concessions available at Prairie Dome Cafe!

12 miles SW on Hwy 123 from US 60

918-336-0307 • 888-966-5276 • Fax 918-336-0084

Woolaroc.org





Frank Phillips Home

In 1909, a picturesque 26-room mansion was built by oil baron Frank Phillips, founder of Phillips Petroleum Company. Today, that fabulous home with its original furnishings remains in the heart of our community for all to see and tour. The impeccable grounds include a carriage house, greenhouse, and gardener's cottage making this the ideal location for your wedding or special event. Immaculately preserved for more than 100 years, this National Register Historic Site reflects the lifestyle of one of Oklahoma's greatest oil barons and a rich part of our city, state and national history. Fittingly, the home is operated by The Frank Phillips Foundation which also manages Woolaroc Museum & Wildlife Preserve, another Frank Phillips family property.

Open Wednesday – Saturday. Closed all major holidays

Guided Tours: Wed-Fri : 10am, 11am, 2pm, 3pm & 4pm

Sat: 10am, 11am, 1pm, 2pm, 3pm & 4pm

Adults \$10, Seniors 65+ & Military \$8, Children ages 5-12 \$5, 4 and under free

Director's Tour: Adults \$15, Children 11-5: \$10

Wed – Fri 9am; Reservations required

1107 SE Cherokee Ave

918-336-2491 • FrankPhillipsHome.org



WOOLAROC
MUSEUM & WILDLIFE PRESERVE

12 MILES SOUTH
OF BARTLESVILLE

EXPERIENCE

the West

1925 WOOLAROC RANCH ROAD | BARTLESVILLE, OK 74003
WOOLAROC.ORG

Visit
THE
FRANK PHILLIPS
HISTORIC HOME

1107 CHEROKEE AVE | BARTLESVILLE, OK 74003
FRANKPHILLIPSHOME.ORG

A History of Filmmaking

From the rolling beauty of the Osage Hills to the iconic historic downtowns of Bartlesville and surrounding communities, movie makers have taken notice of the wonderful backdrop the area has to offer. With amenities galore and this perfect setting, you're sure to find Bartlesville the perfect place to bring the prairie to the big screen.



Terrence Malick's "To the Wonder"

In 2010, Bartlesville was able to serve as a location for Terrence Malick's film "To the Wonder". The film starred Ben Affleck, Rachel McAdams, Javier Bardem, and Olga Kurylenko. Thanks to the Oklahoma Film Enhancement Rebate, "To the Wonder" was the beginning of a beautiful friendship between Bartlesville and the film industry. That same year, Bartlesville also hosted "Pruning the Family Tree", an independent film made by local filmmaker Fritz Green. As film production in Oklahoma grew, Bartlesville became a top spot for consideration, and has gone on to host several productions including small independent films, major motion pictures, and news and reality television programs.



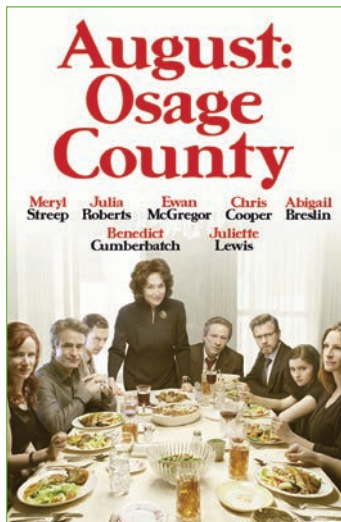
"Killers of the Flower Moon", co-written, produced, and directed by Martin Scorsese

In 2019, scouting began for the film adaptation of David Grann's novel "Killers of the Flower Moon". Apple Studios returned to Oklahoma in late 2020 to begin pre-production for the Martin Scorsese directed film. Cast and crew utilized Bartlesville for housing, production offices, and a soundstage. The production filmed in and around Osage County, Oklahoma from the spring of 2021 until the fall.



The Bartlesville Municipal Airport hangar was used as a soundstage for Killers of the Flower Moon.

In 2022, after more than 12 years of working in partnership with the Oklahoma Film and Music Office, Visit Bartlesville earned the designation as an Official Film Friendly Community with the Oklahoma Film & Music Office. We look forward to hosting even more productions in the future bringing jobs, tourism, and economic development to northeast Oklahoma.



"August: Osage County", directed by John Wells and written by Oklahoman Tracy Letts.

We can't forget back in 1997, area filmmaker Chuck Price brought the film "Possums" to our neighbors to the east, Nowata. Cast and crew stayed in Bartlesville for the award-winning football film. Price continues to film in the area and his latest production was "Full Court Press: The Ken Zacher Story" made with several local cast and crew. Other productions that have filmed or officed in the Bartlesville area include "August: Osage County", "Starbright", "The Real Housewives of New Jersey", "American Pickers", "This is Life with Lisa Ling", "The Beldham", "Cottonmouth", and "The Book of Jobs". For a complete list of films, go to www.visitbartlesville.com.





The largest motion picture to be produced in Oklahoma film history, **"Killers of the Flower Moon"** depicts the true story of the serial murder of citizens of the oil wealthy Osage Nation in 1920s Oklahoma as told in the best-selling novel by David Grann.

Produced by Apple Studios with distribution by Paramount Pictures, the film is directed by Academy Award winner Martin Scorsese ("Taxi Driver") and stars fellow Academy Award winner Leonardo DiCaprio ("The Revenant") and Robert De Niro ("Raging Bull") as well as Lily Gladstone ("First Cow") and Jesse Plemons ("The Irishman") among an all-star supporting cast.

Respectfully honoring the origins of this true story, the production filmed in many of the actual communities throughout the Osage Nation and outlying areas where these historic incidents occurred including Pawhuska, Bartlesville, Fairfax, and Tulsa to name a few.

"Killers of the Flower Moon" had a qualified direct spend of more than \$127 million in Oklahoma generating an additional \$72.3 million in economic output over 154 preparation days and 99 days of filming. The production created more than 470 local career opportunities for crew and an additional 1,200 roles for individuals serving as background talent.

"We respectfully acknowledge that we are on the traditional, ancestral lands of the Osage Nation. The process of knowing and acknowledging the land we stand on is a way of honoring and expressing gratitude for the ancestral Osage people who were on this land before us."

Where Stories Come to Life.



BUFFALO ROAM
STUDIOS

Buffalo Roam Studios blends historic architecture with modern production needs.

Film in our restored sanctuary and fellowship hall, set up base camp, host events, or work from our renovated office spaces.

Expanding in 2026 with an 8,000 square foot sound stage.



BUFFALO ROAM
STUDIOS

Bartlesville, Oklahoma
info@BRoam.com





AT&SF Steam Locomotive No. 940

The Santa Fe Depot in downtown Bartlesville is home to Santa Fe engine No. 940, the last remaining locomotive of its type out of 332 such steamers that saw service. Visitors can enter the locomotive's cab at any time and ring the steamer's big bell. Plus, every Saturday from 8 a.m. to 5 p.m., visitors can also blow the 940's powerful whistle.

Built by Baldwin in 1903 and operated for a half century in Oklahoma and five other states, the 940 was equipped to handle heavy freight trains at a top speed of about 35 miles an hour. Coupled behind this last-of-its-kind locomotive are two beautifully restored rail cars -- a 1914 oil tank car bearing the "Flying A" logo of the long-gone Tidewater Associated Oil Company and a sturdy Santa Fe caboose, built in 1948. The restored interior of the caboose is open for tours periodically.

The Bartlesville Santa Fe Depot, completed in December 1909, once served by two major railroad lines --the Atchison, Topeka and Santa Fe (the "Santa Fe") and the Missouri, Kansas and Texas (the "M-K-T" or "Katy"). Built by the Santa Fe in its trademark architectural style, the carefully maintained structure is currently home to the Bartlesville Regional Chamber of Commerce and the Bartlesville Development Authority.

Three blocks south of the depot along tracks now owned by the South Kansas & Oklahoma Railroad (SKOL), is a 1923 coaling tower built for the MKT. The structure is one of only two like it left in Oklahoma.

201 SW Keeler (outside Santa Fe Depot building)
For more information visit BartlesvilleLocomotive.org

Nellie Johnstone No. 1/Discovery 1 Park

Visit this Oklahoma Centennial Project to see a working replica of Oklahoma's first commercial oil well and view a 19th century cable tool drilling rig in operation. Then, thrill to the GUSHER that put Bartlesville and Oklahoma oil on the map. Docent led tours are available March through November by appointment. The rig and static displays are open year-round.

Oklahoma oil began on March 25, 1897 when the Nellie Johnstone No. 1 oil well came in a gusher on the banks of the Caney River. The news of oil in commercial quantities at Bartlesville, Indian Territory, in the Cherokee Nation just east of the Osage Nation, prompted the Santa Fe Railway to lay track to the town site. Wildcaters, lease hounds and roustabouts hopped trains to Bartlesville and the boom was on!

Daily from dawn to dusk - Free Admission
Call **918-336-8709** for docent led tours.

200 N Cherokee Ave (in Johnstone Park)





Bartlesville Area History Museum

Travel back in time to experience the growth and development of Bartlesville and the surrounding area. The 10,000 square-foot facility welcomes visitors with interactive displays, exceptional photography, intriguing artifacts and a recreated one-room school house. In addition to displays and a changing exhibit gallery, the museum includes areas for educational programs and individual research.

Mon-Fri 8:00am-4pm; Closed Holidays • Free Admission;
Donations appreciated

401 S Johnstone Ave - 5th Floor/City Hall
918-338-4290 • BartlesvilleHistory.com • history@cityofbartlesville.org

Bartlesville Heritage Trail-Downtown District

Downtown Bartlesville was listed as a Historic District on the National Registry of Historic Places in 1991.

Once you visit us, you'll understand why. The blend of architecture reflects the many influences upon our city, from the early Prairie Style brought in by the first settlers to the high-rise corporate skyline built in the late 20th Century. And the stories behind the building faces will entice you as much as the architecture.

The Bartlesville Heritage Trail Walking Tour will lead you to 72 historic sites in downtown Bartlesville. You can access this tour at BartlesvilleHeritageTrail.org.

While walking around our historic downtown district, take a few minutes to stop in at our unique shops and restaurants for hometown flavors and unique gifts, visit the museums, galleries and local attractions.

Downtown Bartlesville Ltd.
918-214-8500 • BartlesvilleHeritageTrail.org



Wall of Honor Veterans Memorial

The Wall of Honor Veterans Memorial recognizes and honors veterans and current military personnel for the bravery and sacrifices they've made to preserve our country's freedom. Located at the northwest entrance of Washington Park Mall, it stands as a permanent tribute to all Americans who have served and are serving our great nation.

Mon-Sat 11am-7pm; Sun 12pm-6pm
Free Admission

2350 SE Washington Blvd
918-335-2535 • WallofHonor.net



La Quinta Mansion

The La Quinta Mansion was designed in 1930 by noted Kansas City architect Edward Buehler Delk. H.V. Foster, located his new home on 152 acres, three miles from the center of town. The 32-room, Spanish style mansion has 14 bathrooms and seven fireplaces. Construction was completed in 1932 and it served as the family home until Mr. Foster's death in 1939. After that time, La Quinta served as the home of a military school, Central Christian College, and Central Pilgrim College. The Wesleyan Church now owns and operates Oklahoma Wesleyan University on the grounds, an accredited, four-year liberal arts college. La Quinta is one of the focal points of the campus and now serves as office space for the President and various staff positions. The mansion is listed on the National Register of Historic Places.

Mon-Fri 8am-5pm; Closed Sundays and Holidays;
Self-guided tour, must call ahead 918-335-6234
Free Admission

2201 Silver Lake Rd
918-335-6234



moxie
— On Second —

Home Decor • Gifts • Apparel

118 E 2nd St
Downtown Bartlesville

Open Monday-Saturday

Home
is where you park it.

BELL

CAMPER SALES

1005 NE Washington Blvd.

918-333-5333 • bellcampersales.com



Bell RV Village

1005 NE Washington Blvd.

918-214-8773 • bellrvvillage.com



Visit us in beautiful Bartlesville, Oklahoma



Kiddie Park

There's no place like Kiddie Park! Established in 1947, it now boasts 18 amusement park rides for children ages 12 and under, and some that adults can ride.

May – August Tue – Sat 6 pm to 9 pm
Open Saturdays mornings in September 10 am to 2 pm

205 N Cherokee Ave (in Johnstone Park)
918-876-3279 • KiddiePark.net



Osage Casino & Hotel - Bartlesville

Osage Casino & Hotel in Bartlesville features over 521 electronic games, table games, 102 luxury hotel rooms, a 6,210 sq. ft banquet space that can be split into smaller areas, full audio-visual services, full service catering, outdoor resort style pool and spa with poolside bar. On-site dining venues. The Casino is open 24 hours a day.

1803 US Hwy 60 (2 miles west of downtown Bartlesville)
877-246-8777 • OsageCasinos.com



Cherokee Casino - Ramona

The fun never sleeps at Cherokee Casino-Ramona. With over 400 of the hottest electronic games around, finding your favorite is easy. In fact, the only thing easier is finding us. Located on U.S. Highway 75 North of Ramona. Mon-Thurs 10am-2am, Fri 10am to Sun 2am.

31501 US 75 Hwy, Ramona
918-535-3800 • CherokeeCasino.com

MARK YOUR CALENDAR 2026

918-336-9900 | OKMMUSIC.ORG



29
MAY



ESPECIALLY FOR KIDS
MUSIC FESTIVAL

05
JUN



42ND ANNUAL
OKM MUSIC
FESTIVAL

03
OCT



OKTOBERFEST

TBD
NOV



CHRISTKINDL
MARKET

01
DEC



#GIVINGTUESDAY
CONCERT

04
DEC



ST. NICHOLAS DAY
CELEBRATION

11
DEC



KEYBOARD
ORCHESTRA CONCERT



Prairie Song Pioneer Village

Prairie Song is a lifelike replica of an 1800's pioneer village with a total of 30 buildings. The village stands in the midst of an authentic working ranch and shows life, work and play as it was in those days.

Tours by appointment only, must call ahead to schedule a tour. Closed holidays and winter (Nov.-Mar). \$25 adults; Groups of 20 or more call for discount pricing.

402621 W. 1600 Rd., Dewey
5.5 miles E on Durham Rd from US 75
918-440-7033 • prairiesong.net



Keepsake Candles

Factory & Gift Shop

Keepsake Candles has a long tradition of offering very unique molded candles with wonderful scents. Brows the gift shop with molded candles, votive candles, scented wax and gift items. Nestled in a beautiful location just outside Bartlesville in a rustic building.

On-site wedding venue

Mon-Sat 10am – 5pm
263 County Rd 3022 (2 miles west on US 60 from US 123)





Tom Mix Museum

This “King of the Cowboys” movie star was a deputy sheriff in Dewey before he hit the big screen. See for yourself the many guns, saddles, and costumes from his movie and circus career. The Tom Mix theater seats 28 people and is designed to replicate the old style movie houses.

Mar-Dec Tue-Sat 10:30am-4:30pm

Jan-Feb Thu-Sat 10:30am-4:30pm weather permitting, closed
Holidays and Sun-Mon, \$5 adults and children 13 and under free

721 N Delaware, Dewey • 918-534-1555
TomMixMuseum.com



Tallgrass Prairie Preserve

A short drive west of Bartlesville lies the Nature Conservancy Tallgrass Prairie Preserve which spans a vast 39,650 acres disturbed only by the thunder of more than 2,500 bison, over 700 plants, 300 birds and 80 mammals make this prairie home. Visitors can experience the wide-open prairie and the patches of crossttimbers forest by circling the 15-mile bison driving loop, hiking along designated trails and stopping to take in the views at various scenic turnouts.

Daily from dawn to dusk - Free Admission

26 miles W of Bartlesville on US 60, then 18 miles N
(follow signs from downtown Pawhuska)
918-287-4803



Dewey Hotel Museum

The Dewey Hotel played a pivotal role in the early economic and social history of the area. Period furnishings, artifacts, photos and displays.

Dec., Jan., Feb. & March Thurs-Sat 10 am to 4 pm

April-Nov. Tue-Sat 10 am to 4 pm

Closed Sun., Mon. & holidays

Adult \$5; Senior and Military \$4; Students 13 and over \$4;
Children 12 and under free with paid adult

Wheelchair accessible on 1st floor only, 2nd & 3rd floors have
staircase access only

801 N Delaware, Dewey • 918-534-0215 • WCHS-OK.org



Pawhuska

In the heart of the **Osage Nation**, the community of **Pawhuska** is alive with activity. The Osage Nation Museum is located here on the grounds of the Nation’s Capitol. Represented in the museum are themes from pre-history, warfare and traditional arts, as well as contemporary Osage artists.

Those “in-the-know” will also associate Pawhuska with *Ree Drummond – The Pioneer Woman* of Food Network fame. This city turned country lady has transformed one of Pawhuska’s prime downtown structures into “**The Merc**”, a shopping and dining destination that has lured thousands of followers from across the nation, to the quaint community of Pawhuska.

Accommodations

| Bartlesville and the surrounding area has many short-term vacation rentals. Please go to our website or search VRBO or AirBnb to see available listings. | | | | | | | | | | |
|--|--------|----------|------------------|--------------------|---------------|---------|-----------------|-------------|-------------|--|
| PROPERTY NAME | RATE | # OF RMS | MTG RM CAPACITY | RESTAURANT | INTERNET | FITNESS | KITCHENETTE | POOL IN/OUT | BREAKFAST | PETS OK |
| Budget Inn 1410 SW Frank Phillips Blvd 918-336-5599 • Fax 918-336-7375 | \$ | 50 | N/A | NO | YES | NO | Micro/Fridge | NO | NO | LIMITED RMS/ FEE |
| Econo Lodge 3910 SE Nowata Rd 918-333-0710 • 1-800-4CHOICE Fax 918-333-6559 | \$\$ | 40 | N/A | NO | YES | NO | Micro/Fridge | OUT | CONTINENTAL | YES/FEE |
| Extended Stay America 3812 SE Washington Pl 918-766-0044 ExtendedStayAmerica.com | \$\$\$ | 89 | N/A | NO | Free Wi-Fi | YES | YES | NO | GRAB & GO | YES/FEE |
| Fairfield Inn & Suites 2107 SE Washington Blvd 918-331-2100 • Marriott.com | \$\$\$ | 85 | 30 | NO | YES | YES | Micro/Fridge | IN | HOT | Service Only |
| Hampton Inn 130 SE Washington Blvd 918-333-4051 • 1-800-HAMPTON Fax 918-333-0672 | \$\$\$ | 67 | 30 | NO | Free Wi-Fi | YES | Micro/Fridge | IN | HOT | Service Free/ Pets w/Fee |
| Hilton Garden Inn Downtown 205 SW Frank Phillips Blvd 918-336-0808 • 1-877-STAY-HGI HiltonGardenInn.com | \$\$\$ | 100 | 600 | Restaurant/ Bar | YES | YES | Micro/Fridge | IN | RESTAURANT | Service Only |
| Holiday Inn Express Hotel & Suites 4016 Price Rd 918-766-0020 • HIExpress.com | \$\$\$ | 90 | 12 | NO | YES | YES | Micro/Fridge | IN | HOT | Service Only |
| Home Place Suites 1410 SE Washington Blvd 918-212-6296 • Fax 918-331-9552 | \$\$ | 106 | N/A | NO | YES | YES | Only in Studios | IN | NO | \$50 non- refundable fee per pet |
| MOTEL 1 211 SE Washington Blvd 918-335-1122 • Fax 918-335-1708 | \$\$ | 40 | N/A | NO | YES | NO | Micro/Fridge | NO | NO | YES/FEE |
| Osage Casino Hotel 1803 US-60, Bartlesville, OK 74003 (877) 246-8777 www.osagecasinos.com | \$\$\$ | 102 | 6,210 sq. ft. | Restaurant/ Bar | YES | YES | Mini Fridge | OUT | RESTAURANT | Service Only |
| Skyline Motel * 2315 SE Washington Blvd 918-333-1183 • Fax 918-333-4270 | \$ | 34 | N/A | NO | YES | NO | Micro/Fridge | NO | NO | YES/FEE |
| Travelers Motel 3105 SE Frank Phillips Blvd 918-333-1900 | \$ | 24 | N/A | NO | YES | NO | Micro/Fridge | NO | NO | YES/FEE |

*Does not accept credit cards.

Legend: \$-\$75 & Under; \$\$-\$76-\$110; \$\$\$-\$111-\$140; \$\$\$\$-\$141 & Above Amounts may change depending on demand.





Cabin at Osage Hills State Park

Lakes & Parks

Birch Lake

RV and tent camping, picnic areas, swimming, playground, showers, group shelter, boating, hunting and fishing.

20 miles southwest of Bartlesville • 918-396-3170

Copan Lake

Copan Point day use area features designated beach area, picnic sites, boat launch and fishing dock. Washington Cove Campground and Post Oak Campground have RV hookups with electric and water, public showers and restrooms. Fish for Trout at Prairie Pond, stocked every November.

396120 State Hwy 10, Copan • 918-532-4334

Hudson Lake

Boat launching ramp with fishing and boater use dock nearby. Surrounded by wooded hills, this lake is considered to be one of the most beautiful in the area with mountain bike, hiking and walking trails. No swimming allowed. Boating permits (available at Bartlesville City Hall) and fishing licenses are required with the exception of canoes and kayaks, otherwise there is no charge for use of this or any of the city parks.

Located north and west of Bartlesville off Sunset Blvd.

Lee Lake

16-acre fishing lake owned by the City of Bartlesville includes a boat ramp, dock and three “finger islands,” as well as asphalt trails connecting to the city’s **Pathfinder Parkway** trail system, soccer fields, restrooms, skate park, Cricket field, Disc Golf, and Cooper Dog Park.

Located on Adams Boulevard just E of Silver Lake Road.

Osage Hills State Park

• 8 cabins • 19 RV sites • 2 Wall Tents and 25 Primitive Sites.

Over 1,100 acres with picnic tables and shelters, hiking trails, canoe & kayak rentals, campgrounds, lake (non-gasoline boating only), public pool, fishing, ball field and tennis.

Reservations are required and can be made by calling the

park office during business hours or online at

www.travelok.com/state-parks/osage-hills-state-park

11 miles W on US 60 from Hwy 123 • 918-336-4141

Wah-Sha-She Park located on Hulah Lake

• 47 RV sites • 15 tent sites • Picnic tables and shelters, campgrounds, nature trails, boating, skiing, fishing and playground. 1st come 1st serve.

**18 miles N on US 75 to Copan, then 15 miles W on Hwy 10
918-532-4334**

RV Parks

Bell RV Village

• Full hookup, water, sewer, Free TV, Wi-Fi
• Daily, weekly or monthly rates

1001 Washington Blvd • 918-214-8773 • BellRVVillage.com

Prairie View Campground & RV Park

• Full RV hookup - 23, 30 & 50 amp
• Electric, water, sewer, Wi-Fi, fire pit
• Bunk Rooms
• Tent Camping

402512 US Hwy 60 • 918-876-2224

PrairieViewCampground.org

Riverside RV Resort & Campground

• 70 Sites, full hookup, water, sewer, electric 20-30-50 Amp Service, pull throughs, free TV, Wi-Fi, dog park, pool, laundry room and showers.

Daily, weekly or monthly rates

1211 SE Adams Blvd, 1.5 mi W on Adams Blvd from US 75

918-336-6431 • ResortRV.com

My Green Country RV Park

• Extra-long full hookup sites, electric included, RV Rental, RV Storage.

2700 Yorman Rd. • 918-352-6151

Dining

American

| | | |
|--|--------------------------------------|--------------|
| Arby's | 220 NE Washington Blvd | 918-333-1582 |
| Arby's | 2935 E Frank Phillips Blvd | 918-333-7293 |
| * Bambino's Downtown Bistro | 101 SE Frank Phillips Blvd | 918-336-0222 |
| * Black Ivory Bru House | 1709 ½ SW Frank Phillips Blvd | 918-550-1083 |
| Boom-a-rang Diner | 116 Frank Phillips Blvd | 918-337-3747 |
| * Boulevard Diner | 205 SE Washington Blvd | 918-333-0050 |
| Braums | 3820 SE Adams Blvd | 918-333-9320 |
| Braums | 2526 SE Washington Blvd | 918-333-5277 |
| Bricktown Brewery | 505 SE Frank Phillips Blvd | 918-876-1866 |
| * Bubble Wrapped | 2350 Washington Blvd. | 918-876-0571 |
| Burger King | 3801 SE Adams Rd | 918-335-1380 |
| * Café On The Plaza | 315 S Johnstone Ave | 918-661-5642 |
| Cherokee Casino-Ramona Grill | 31501 US 75 Hwy | 918-379-5400 |
| Chick-fil-A | 602 SE Washington Blvd | 918-331-9956 |
| Chicken Express | 1234 SE Washington Blvd | 918-876-0232 |
| Chili's Grill & Bar | 2131 SE Washington Blvd | 918-335-2654 |
| * Cooper & Mill Brewing Co | 200 Dewey Ave | 918-876-3535 |
| * Crossing 2nd | 215 E 2nd St | 918-337-2219 |
| * Dink's Pit Bar-B-Que | 2929 E Frank Phillips Blvd | 918-335-0606 |
| * DJ's Southern Snow | 319 S. Dewey Ave | |
| * Dusty Rose Cakes | 503 ½ Shawnee | 918-214-2539 |
| Dutch Bros. Coffee | opening soon 1310 SE Washington Blvd | |
| Eggbert's | 2073 SE Washington Blvd | 918-333-9690 |
| * Frank & Lola's | 200 E 2nd St #1 | 918-336-5652 |
| Freddy's Frozen Custard & Steaksburgers | 2100 SE Washington Blvd | 918-876-4150 |
| * Grayson's Donut Hole | 809 S. Madison Blvd. | 918-331-9995 |
| Great American Grill (Hilton Garden Inn) | 205 SW Frank Phillips Blvd | 918-336-0808 |
| HTeaO | 2448 SE Washington Blvd | 539-233-4047 |
| IHOP-Int'l House of Pancakes | 1410 SE Washington Blvd | 918-331-9700 |
| * Jared's Frozen Custard | 4607 Nowata Rd | 918-766-0111 |
| Jimmy's Egg | 2330 SE Washington Blvd | 918-213-4140 |
| * Jude's Health & Java House | 2503 SE Washington Blvd | 918-335-0500 |
| Kentucky Fried Chicken | 3125 E Frank Phillips Blvd | 918-333-5332 |
| * Lollipops Woodfire and Grocery | 311 Dewey Ave. | 918-907-1908 |
| Lot-A-Burger | 1520 SW Frank Phillips Blvd | 918-336-7700 |
| McAlister's Deli | 2539 SE Washington Blvd | 918-333-6614 |
| McDonalds | 2441 SE Washington Blvd | 918-333-3232 |
| McDonalds | 606 SE Washington Blvd | 918-333-6060 |
| * Midway Café | 641 SE Washington Blvd | 918-335-1000 |
| * Mr. Munchies | 3604 Tuxedo Blvd | 918-213-0883 |
| * Murphy's Steak House | 1625 SW Frank Phillips Blvd | 918-336-4789 |
| Osage Casino | 1803 US Hwy 60 | 877-246-8777 |
| * Outpost Coffee | 200 E 4th St | 918-886-2594 |
| * Painted Horse Bar & Grill | 110 SW Frank Phillips | 918-336-1100 |
| * Palace Rooms | 309 Dewey Ave | 918-907-1908 |
| Pop's Daylight Donuts | 4107 Nowata Rd. | 918-766-1769 |
| * Price's Meat Market | 4025 Nowata Rd | 918-766-0811 |
| * Remi's Arcade & Bistro | 622 SE Frank Phillips | 918-928-3338 |
| Rib Crib | 2077 SE Washington Blvd | 918-333-6200 |
| * Roso's Coffee Co. | 3920 Nowata Rd | 918-214-8111 |
| Sal's Daylight Donuts | 812 SE Frank Phillips Blvd | 918-337-9170 |
| Schlotzsky's | 3813 E Frank Phillips Blvd | 539-529-8009 |
| Scissortail Brewing | 623 E. Don Tyler Ave., Dewey | 918-350-3209 |

Company

| | | |
|--|-----------------------------|--------------|
| Scooters Coffee | 510 S Washington Blvd | 918-876-3988 |
| 7 Brew | 600 SE Washington Blvd | 479-358-9274 |
| Sonic | 3800 Nowata Rd | 918-331-9725 |
| Sonic | 271 SW Adams Blvd | 918-337-3660 |
| Starbucks | 3801 E Frank Phillips Blvd | 918-331-9436 |
| * Sterling's Grille | 2905 SE Frank Phillips Blvd | 918-335-0707 |
| Subway | 1412 SE Washington Blvd | 918-335-1325 |
| Subway | 401 S Dewey Ave | 918-336-0325 |
| * The Eatery by 3 Kids & A Cake | 324 S Johnstone Ave | 918-886-3893 |
| * The Local Juice Company | 119 W 2nd | 918-876-1028 |
| * The Sweet Spot (inside The Creamery) | 515 SW Frank Phillips Blvd | |
| * Thirsty's | 900 S Madison Blvd | |
| * TJ's (Eastside) | 3925A E Frank Phillips Blvd | 918-214-8227 |
| * 3 Sisters Nutrition | 3815 E Tuxedo Blvd Suite F | 918-440-5553 |
| Tropical Smoothie Café | 3315 E Frank Phillips Blvd | 539-207-2207 |
| * Tumbleweeds Steakhouse | 4049 SE Nowata Rd | 918-333-9300 |
| * Weeze's Café | 328 S Dewey Ave | 918-337-0881 |
| Wendy's | 3425 SE Frank Phillips Blvd | 918-331-9931 |
| Whataburger | 1350 SE Washington Blvd | 918-876-1532 |

Mexican

| | | |
|---------------------------------|----------------------------|--------------|
| Abelardo's Mexican Fresh | 2340 SE Washington Blvd. | 918-397-9988 |
| * Chela's Buffet | 223 S. Comanche Ave. | 918-766-9312 |
| El Maguey Mexican Grill/Cantina | 1900 SE Washington Blvd | 918-914-2906 |
| * La Arepa Criolla | 901 SE Frank Phillips Blvd | 918-290-5408 |
| * La Fiesta | 3800 SE Washington PI | 918-333-0032 |
| * Mayra's Mexican Grill | 840 S. Madison Blvd | 918-876-3238 |
| Mexico Viejo Bar & Grill | 201 SE Washington Blvd. | 918-977-1855 |
| * Sabores Mexican Cuisine | 317 S Osage, Dewey | 918-860-5051 |
| Señor Salsa | 621 SE Washington Blvd | 918-333-8226 |
| Taco Bell | 3875 SE Green Country Rd | 918-333-0963 |
| Taco Mayo | 3505 E Frank Phillips Blvd | 918-333-3934 |
| * Tacos Maria | 3900 E Frank Phillips Blvd | 918-876-3899 |
| * Tacos Pachitas | 609 SW Frank Phillips | 918-876-6445 |
| * Taqueria Sarita | 3910 Nowata Rd. | 405-763-9587 |

Italian

| | | |
|------------------------------|----------------------------|--------------|
| Domino's Pizza | 4100 SE Washington Blvd | 918-335-1300 |
| * Game Time Pizza | 1414 SE Washington Blvd | 918-337-3113 |
| Hideaway Pizza | Frank Phillips & Johnstone | 918-214-8777 |
| Little Caesar's Pizza | 3535 Frank Phillips Blvd | 918-333-6000 |
| * Luigi's Italian Restaurant | 1407 Washington Blvd | 918-333-4646 |
| Mazzio's Pizza | 511 SE Washington Blvd | 918-335-5555 |
| Papa John's Pizza | 1910 SE Washington Blvd | 918-333-1414 |
| Pizza Hut | 3085 SE Washington Blvd | 918-333-7711 |
| Simple Simon's Pizza | 1412 SE Washington Blvd | 918-331-9500 |

Asian

| | | |
|--------------------------|----------------------------|--------------|
| * Buffet Garden | 3825 SE Adams Rd. | 918-313-8318 |
| * New China Super Buffet | 3920 E Frank Phillips Blvd | 918-333-1113 |
| Panda Express | 2307 SE Adams Blvd | 918-331-9919 |
| * Shanghai Town | 207 S Comanche Ave | 512-981-3800 |
| * SOHO Hibachi & Sushi | 320 SE Washington Blvd | 918-876-3936 |
| * Sushi One | 3805 SE Washington Blvd | 918-333-8686 |

*Unique to Bartlesville

Shopping

Downtown

Find unique specialty shops in this quaint and charming downtown environment, including the Market Square shops located in the historic I.T.I.O. Building.

Silver Lake Village Shopping Center

Shopping center including retail shopping and restaurants.

2687 SE Adams Blvd (Adams Blvd & Silver Lake Rd)

Eastland Shopping Center

Shopping center including restaurants and retail shopping.

US 75 (Washington Blvd) and Frank Phillips Blvd • 918-438-1540

Washington Park Mall

Regional mall including national chains, one-of-a-kind shops, and an eight screen movie theater.

2350 SE Washington Blvd • 918-335-2535 • WashingtonParkMall.com

Antique Shops - Bartlesville

| | | |
|---------------|---------------------|--------------|
| Gan's Mall | 3801 SE Kentucky St | 918-335-1046 |
| Tuesday House | 321 S Penn | 918-336-9154 |

Familiar Favorites

| | | |
|------------------------------|-------------------------------|--------------|
| Atwoods | 3101 SE Washington Blvd | 918-331-9000 |
| Bath and Body Works | Silver Lake Village | 918-335-1570 |
| Bealls Outlet | 501 SE Washington Blvd | 918-333-5655 |
| Big Rock Foods | Washington Park Mall | 405-269-8558 |
| CVS Pharmacy | 3711 SE Frank Phillips Blvd | 918-333-5217 |
| Dillard's Clearance Center | Washington Park Mall | 918-335-3300 |
| Dollar General (3 locations) | 3009 E Frank Phillips Blvd | 918-333-5447 |
| Dollar Tree | 2654 SE Washington Blvd | 918-604-3195 |
| Dollar Tree | 501 SE Washington Blvd | 539-399-5226 |
| Dunham's Sports | Washington Park Mall | 918-333-5301 |
| Family Dollar | 1111 SW Frank Phillips Blvd | 918-336-0880 |
| Five Below | 501 SE Washington Blvd | 918-553-7661 |
| GNC | Silver Lake Village | 918-876-0299 |
| Hobby Lobby | Eastland Shopping Center | 918-333-9313 |
| Lowe's Home Improvement | 2205 SE Adams Blvd | 918-331-2000 |
| Maurice's | Silver Lake Village | 918-331-3649 |
| Ollie's | 501 SE Washington Blvd | 918-213-4895 |
| Petco | Silver Lake Village | 918-886-6224 |
| Rack Room Shoes | Silver Lake Village | 918-331-9896 |
| Ross Dress For Less | Silver Lake Village | 918-331-9348 |
| Shoe Dept. Encore | 501 SE Washington Blvd | 918-332-2409 |
| Staples | 2400 SE Washington Blvd Ste A | 918-335-9135 |
| TJ Maxx | Silver Lake Village | 918-214-8151 |
| Tractor Supply Company | 3403 SE Washington Blvd | 918-331-0367 |
| Uita | Silver Lake Village | 918-331-9817 |
| Wal-Mart | 4000 SE Green Country Rd | 918-335-6600 |
| Walgreens | 3816 E Frank Phillips | 918-333-0588 |
| Walgreens | 1920 SE Washington Blvd | 918-335-4305 |

Specialty Shops

| | | |
|-------------------------------|----------------------|--------------|
| A Fresh Start Resale Boutique | 3700 E Tuxedo | |
| Ash Cigar Co. | 117 NE De Bell Ave | 918-578-9186 |
| Ashlynn Nicole's Boutique | Washington Park Mall | 918-876-3926 |
| Baby Byrds | Washington Park Mall | |

| | | |
|-----------------------------|--------------------------------------|--------------|
| Bartlesville Bikes | Washington Park Mall | 918-440-8745 |
| Billie's Health Food Center | 313 S Osage Ave | 918-336-8609 |
| Boots & Brushes Paintbar | 322 S Johnstone Ave | 918-213-0099 |
| Brown's Shoe Fit Co | Eastland Shopping Center | 918-333-5889 |
| Bubble Wrapped Candy Shop | | |
| & Balloons | Washington Park Mall | 918-876-3926 |
| Early Bird Market | 101 SE Frank Phillips Blvd. | 918-841-2202 |
| Enchantments & Oddities | 538 SE Washington Blvd | 918-876-6084 |
| Eva's Flowers and Gifts | 1524 SE Washington Blvd | 918-333-3006 |
| \$5 Gold Diggers | 520 SW Washington Blvd | |
| Farm Hippie | Downtown Bartlesville Farmers Market | |
| Few Doors Down | 112 E 2nd St. | 918-214-8876 |
| Gan's Mall | 204 SE Washington Blvd | 918-335-1046 |
| Glorious Connections Books | 310 Dewey Ave. | 918-337-8095 |
| Grit & Grace | Washington Park Mall | 918-876-3926 |
| Honey's Flowers | 100 SW Frank Phillips Blvd | 918-333-8181 |
| Jude's Health & Java House | 2503 SE Washington Blvd | 918-335-0500 |
| Keepsake Candles | 263 Co. Rd 3022 | 918-766-1216 |
| Marigolds Bookstore | 118 W 2nd St | 918-805-2294 |
| Martha's Task | 718 S Johnstone Ave | 918-336-8275 |
| Matt's Music Store | 204 S Chickasaw Ave | 918-534-8328 |
| McCoy Jewelers | 306 S Dewey Ave | 918-336-4300 |
| Mellie's Vintage | Washington Park Mall | 304-667-8327 |
| Moxie on Second | 118 E 2nd St | 918-876-6943 |
| P&K Equipment | 665 NE Washington Blvd | 918-335-2650 |
| Paper Games | 574 SE Washington Blvd | 918-876-3651 |
| Quilter's Hideaway | 3910 Tuxedo Blvd | 918-214-8714 |
| Roots & Blooms | 3419 SE Frank Phillips Blvd | 918-333-0127 |
| Sand Creek Bridal | 101 SE Frank Phillips call for appt. | 918-876-6070 |
| Sew Uptown | 316 SE Dewey Ave | 918-332-8956 |
| Teton Trade Cloth | 160 SW Frank Phillips Blvd | 918-609-0186 |
| The Crafty Candle Shoppe | 1201 NE Washington Blvd | 918-727-0302 |
| Time Travelers | Washington Park Mall | 918-841-8276 |
| Time Travelers Recollectica | Washington Park Mall | 918-841-8276 |
| Treasure Trove | Washington Park Mall | |
| Windle's Rock & Jewelry | 3540 SE Washington Blvd | 918-333-2814 |
| Yocham Custom Leather | Hwy 60 east of city | 918-335-2277 |

Dewey

| | | |
|-----------------------------|----------------------------|--------------|
| 313 Antiques | 313 Don Tyler Ave | 918-830-4992 |
| Campbell's Antiques | 418 E Don Tyler Ave | 918-331-6214 |
| City Chic Boutique | 322 E. Don Tyler | 918-860-2755 |
| Linger Longer Antiques | 814 N Shawnee Ave | 918-534-0610 |
| MiMi's | 402 E Don Tyler Ave | 918-534-0500 |
| Popkess Pharmacy | 524 E Don Tyler Ave, Dewey | 918-534-2262 |
| Sabores Mexican Cuisine | 317 S Osage Ave | 918-860-5051 |
| Scissortail Brewing Company | 623 E. Don Tyler Ave. | 918-350-3209 |
| Simple Simon's Pizza | 414 E Don Tyler Ave. | 918-534-0300 |
| Sonic | 304 S Osage | 539-337-0025 |
| Subway | 2392 N Osage | 918-534-2008 |
| * Sunrise Donuts | 1108 N Osage | 918-534-3614 |
| The Vault | 400 Don Tyler Ave | 918-338-9889 |
| The Vintage Loft | 410 Don Tyler | 918-534-3378 |

Activities

| ACTIVITY | NAME | PHONE/WEB | DESCRIPTION |
|-------------------------|--|--|---|
| AMUSEMENT PARK | Kiddie Park 200 N Cherokee (in Johnstone Park) | 918-876-3279 KiddiePark.net | May-Aug. Tues-Sat 6 pm to 9 pm, Sept. open Sat. 10 am to 2 pm |
| ARCHERY | The Arrow Shop & Indoor Range 131 North Osage Dewey, OK | 918-333-8025 ArrowShopOK.com | Archery gear, services for arrows and bows, Indoor Range, lessons for beginners, intermediate and advanced. |
| ARCHERY/SHOOTING | Bartlesville Archery Club at Hudson Lake | 918-338-9106 | Membership required to use this range. Memberships are available at the Arrow Shop, 131 N. Osage, Dewey, OK 74029. |
| | Bartlesville Sportsmen's Club 491 NE Young St | BartlesvilleSportsmensClub.org | Archery, rifle, pistol, skeet and trap. Special events and monthly rifle matches. Also classes and training. |
| | Guns of Glory 427 S. Osage Ave. Dewey, OK 74029 | 918.534.8758 www.gogok2a.com | An indoor shooting range providing firearms training and gun shop to civilians and law enforcement. |
| BASEBALL | American Legion Baseball Bill Doenges Memorial Stadium North end of Dewey Ave on Hensley | 918-338-4154 Legion.org/Baseball | See area baseball teams compete in historic stadium. Concessions available. 4th of July weekend tournament. |
| BOWLING | Red Apple Sports Center 1414 SE Washington Blvd | 918-333-6640 RedAppleBowling.com | Open daily, 32 lanes, automatic scoring game room and pool table. Glow-in-the-Dark Bowling Friday and Saturday nights. |
| CASINO | Cherokee Casino Ramona 31501 US 75 Hwy, Ramona | 918-535-3800 CherokeeCasino.com | Open Mon-Thur. 10 am to 2 am, Fri. 10 am to Sun. 2am. Casino with restaurant, large bar, entertainment space and over 400 electronic games. |
| | Osage Casino 1803 US Hwy 60 (2 miles west of downtown Bartlesville) | 877-246-8777 OsageCasinos.com | Open 24 hours daily. 521 exciting electronic games, table games, 102 luxury hotel rooms, pool & spa. On-site dining. Banquet space that can be split into smaller area. |
| DISC GOLF | Sooner Park CityOfBartlesville.org | Shawnee Trails (Shawnee South of High School) DGCourseReview.com | Lee Lake Disc Golf CityOfBartlesville.org |
| DOG PARK | ARF Park Dog Park 39951 US Hwy 60 (east of Bison Rd) | Sunrise to sunset ARFok.org/pages/dog-park | \$50 Annual Membership - 5 fenced acres, 2 areas |
| | Cooper Dog Park 2400 Adams Blvd | 6am-11pm BarkParkBuddies.com | An excellent example of a partnership between the City of Bartlesville and a group of civic-minded residents, provides over 2.5 acres "where a dog can be a dog". |
| FISHING | Area fishing at Lee Lake, Jo Allyn Lowe Park, Osage Hills State Park, Copan Lake, Hulah Lake, Birch Lake and Hudson Lake. | Find state fishing license requirements at: TakeMeFishing.org/state/page/get-a-license/state/OK | |
| GOLF | Boots Hollow Golf Club 5801 E Tuxedo Blvd | 918-331-3900 | Open daily, call for reservations and pricing. |
| MINIATURE GOLF | Sooner Jr. Miniature Golf 146 SE Madison (in Sooner Park) | 918-977-3400 | Open Seasonally May-Sept. Fri -Sun 6 pm -9 pm |
| MOVIES | Movies 8 2350 SE Washington Blvd (Washington Park Mall) | 844-462-7342 | 8 screens, new movies |
| PARKS | City Soccer Fields and Cricket Pitch Over 15 city parks including Pathfinder Parkway , a 16 mile jogging and biking trail | Contact the Visitors Bureau or visit the city website at CityofBartlesville.org for more information on individual parks. | Sooner Park has a Frisbee Golf Course, Pickleball Court, as well as play equipment, band shell, picnic facilities, sand volleyball courts, model aircraft flying area and public swimming pool. |
| | Don Tyler Park On Durham Rd in Dewey | 918-534-2272 CityOfDewey.com | Don Tyler Park includes shelter, playground and restrooms. |
| | Tower Center at Unity Square 300 SE Adams Blvd between Price Tower and Bartlesville Community Center | 918-337-2787 UnitySquareBville.com | Urban Green Space located between Price Tower and Bartlesville Community Center |
| SKATE PARKS | Lee Lake Skate Park 2400 Adams Blvd | CityOfBartlesville.org | Outdoor skate park featuring a concrete skate course with street amenities and bowls. |
| | On the Rock Ministries, Inc. 122 SW Park Street | 918-336-2636 | Indoor skate park |
| SWIMMING | Frontier Pool 312 SW Virginia | 918-338-4198 | Frontier open seasonally 12 pm to 6 pm daily. Admission \$2 children 6 & younger, adults 65+ & active Military, \$4 for ages 7 to 64. |
| | Sooner Pool & Splashpad 420 SE Madison (in Sooner Park) | 918-338-4197 | Open seasonally 12 pm- 6 pm Mon-Thur. & 12 to 8:30 Fri & Sat. Admission \$2 children 6 & younger, adults 65+ & active Military, \$4 for ages 7 to 64 |
| | Osage Hills State Park 11 miles W on US 60 | 918-336-4141 | Open seasonally. Call for information. |

Sports and Recreation

The centerpiece of recreation and sports in Bartlesville is the **Pathfinder Parkway**, a 16-mile jogging and biking trail that began in 1976 as Bartlesville's American Bicentennial project. Much of the trail runs along the Caney River and directly connects **JoAllyn Lowe**, **Robinwood** and **Johnstone** parks.

At **Johnstone Park** the trail is close to softball fields, indoor and outdoor skateboard parks, **Kiddie Park** amusement park, the **Richard Kane YMCA** which sponsors youth football and basketball and the fully renovated 1931 **Doenges Memorial Stadium**.

Built for the city's former minor league baseball team, Doenges Stadium has been home to American Legion Baseball for decades and was the site of **2003** and **2007 American Legion World Series**. The annual **Glen Winget Tournament** takes place over the July 4 holiday. Bartlesville High School also plays at Doenges Stadium along with some Oklahoma Wesleyan University games.

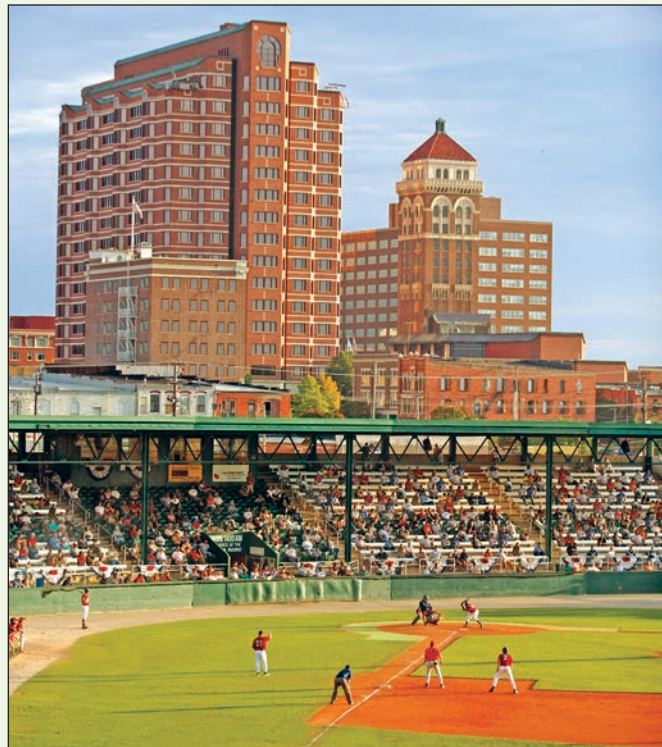
Travel the Pathfinder to **Robinwood Park**, the center of the Washington County Soccer Program, then south to new tournament quality soccer fields, alongside **Cooper Dog Park** and **Lee Lake**.

Pathfinder extends east to **Sooner Park**, site of the newly renovated 1964 **Bruce Goff Play Tower**, a unique 50-foot high structure designed by architect Bruce Goff. Look down from the tower on the **Boots Hollow Golf Club**, **Sooner Junior Miniature Golf Course** and disc golf course (all are 18 holes), sand volleyball facilities, one of two municipal swimming pools and a splash pad.

Bartlesvillians have loved basketball since 1919 when the **Phillips 66er's Industrial Basketball Team** played its first game. The 66ers were the best-known Industrial League team in the country. They won 11 American Athletic Union championships between 1940 and 1963 and six straight titles from 1943 to 1948. They played their last game in 1968. In recent years, the Bartlesville Sports Commission has coordinated NCAA Division II basketball tournaments for the Lone Star Conference and **Great American Conference**.

The **Bartlesville Splash Club** has been a leader in competitive diving and swimming since the 1950s, and the **Bartlesville Gymnastics Club**, organized in 1966, may be the oldest club in the country. Additionally, in keeping with the growing international reach of local employers, both rugby and cricket are played in Bartlesville.

For more information on sporting venues, contact **Visit Bartlesville** at 918-336-8709 or the following Sporting Venues.



Sporting Venues

Opening Spring 2026
Aught2 Pickleball
5404 SE Taylor Drive
Bartlesville, OK 74006
aught2pickleball.com

Bartlesville High School Custer Field
1700 SE Hillcrest Dr • 918-337-0153
BPS-OK.org/BHS/Athletics

Oklahoma Wesleyan University
2201 Silver Lake Rd
918-333-6151 • OKWU.edu/Athletics

Bill Doenges Memorial Stadium
American Legion Baseball North end
of Dewey Ave on Hensley
918-338-4154 • Legion.org/Baseball

Tuxedo Fields (baseball & softball)
208 NE Young at Tuxedo Blvd
WCYBS.com

Phillips Aquatic Center
411 SW Keeler Ave (Adams Bldg)
918-876-2052
Phillips66SplashClub.org

Bartlesville Gymnastics Club
1805 SW Adams Blvd
918-214-8535
Phillips66Gymnastics.com

Phillips 66 Gymnasium
511 SW Keeler Ave (Adams Bldg)
918-661-3012

Boots Hollow Golf Club
5801 E Tuxedo Blvd
Reservations & pricing:
918-331-3900
Fax 918-335-2241

Robinwood Park (soccer)
E Frank Phillips Blvd across from
Sterling's Grille
BartlesvilleSoccer.org

City Soccer Fields
SE Adams Blvd & Silver Lake Rd
across from Lowe's
BartlesvilleSoccer.org

Richard Kane YMCA
101 NE Osage
918-336-0713
RKYMCA.org

Other places to visit and see while in the area

Visit the Osage and the Osage Nation:

visittheosage.com

osageculture.com/visitors/visitors-center

Osage Nation Visitors Center

602 East Main Street, Pawhuska, OK 74056 • 918-287-5266

Pioneer Woman Mercantile

532 Kihekah Ave., Pawhuska, OK • 918-528-7705

Constantine Theater

110 W. Main St., Pawhuska, OK • 918-900-6161

Osage County Historical Society Museum

700 Lynn Ave., Pawhuska, OK • 918-287-9119

Osage Nation Museum

819 Grand Ave., Pawhuska, OK • 918-287-5441

Ben Johnson Cowboy Museum

201 E 6th, Pawhuska, OK • 918-287-9922

Swinging Bridge

intersection of Kihekah & 2nd St., Pawhuska, OK

Metal Sculptures can be seen looking west on Main St. & Katy Ave. Hominy, OK

Drummond Historical Home

305 N. Price Ave. Hominy, OK • 918-352-5583

Barnsdall, OK:

Barnsdall Main St. Well Site (worlds only Main Street Oil Well)

800-898 W. Main St.

Birch Lake fishing, tent & RV camping, 2 swim beaches, playground, picnicking.

Co. Rd 2409

Big Heart Museum

616 W Main St • 918-847-2397

Nowata OK:

Ernie the Pig Statue

Hwy 75 & 60 Bartlesville go east 14.2 miles towards Nowata, 10910 US Hwy 60. What will Ernie be doing today?

Glass Mansion

324 W. Delaware • 918-273-1191

nowatamuseum.org/

Nowata County Historical Society Museum

136 S. Oak • 918-273-1191

nowatamuseum.org/



Talala, OK:

Winganon Concrete Mixer Space Capsule

E 300 Rd outside of Talala, OK.

Oologah, OK:

Will Rogers Birthplace Ranch

9501 E 380 Rd

visitcherokeeanation.com/attractions/will-rogers-birthplace-ranch/

Claremore, OK:

Will Rogers Museum

1720 W. Will Rogers Blvd • 918-341-0719

willrogers.com/

J M Davis Arms & Historical Museum

300 N. J M Davis Blvd • 918-341-5707

thegunmuseum.com/

Caney KS:

Safari Zoological Park - guided tours offering close encounters with over 150 animals

1751 A County Rd 1425 • 620-515-2886

facebook.com/SafariZoologicalPark/#

Coffeyville KS:

Brown Mansion

2109 S. Walnut St • 620-251-0431

coffeyvillehistory.com/

Dalton Defenders Museum

814 S. Walnut St • 620-251-5944

.coffeyvillehistory.com/

Independence KS:

Little House on the Prairie Museum

2507 CR 3000 Rd • 620-289-4238

lhopmuseum.com/



STEPHANIE
Collinsville, OK



DAMON
Sallisaw, OK

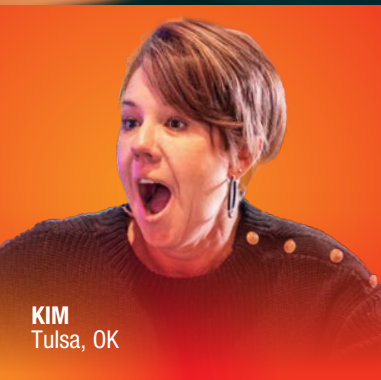
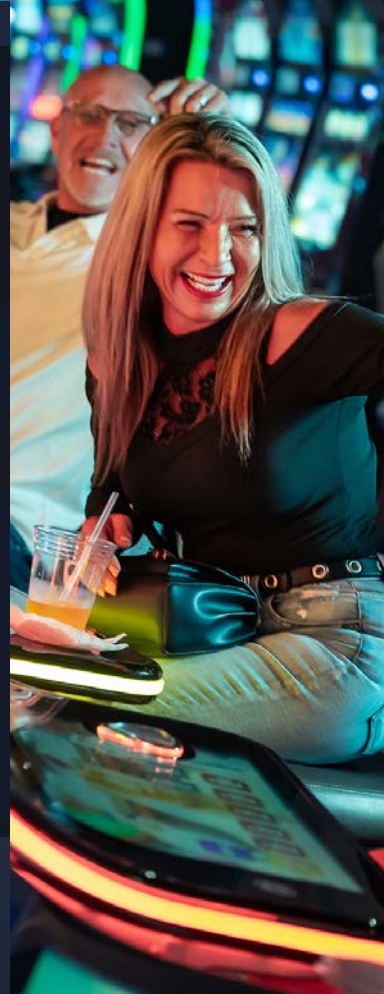


Osage
CASINO HOTEL
BARTLESVILLE

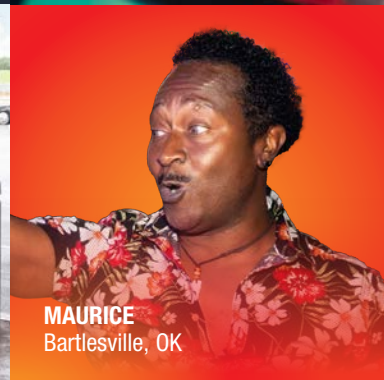
ALL IN ON YOU.

Where do you go to be the center of it all? Osage Casino Hotel Bartlesville, where our stars are the folks we welcome every day. Whether you're here for the exciting slots or table games, the overnight retreat, the live tunes or quiet dinner for two, we go all in so you can go all out.

osagecasino.com | Hotel Reservations: 877-246-8777



KIM
Tulsa, OK



MAURICE
Bartlesville, OK



Calendar of Events

- May** Stray Kat Kar Show, StrayKatKustoms.com
- May** Delaware Pow Wow, DelawareTribe.org/TribalSite
- June** Sunfest, BartlesvilleSunFest.org
- June** OKM Music Festival **918-336-9900**, OKMMusic.org
- June** Antique & Collectible Fair & Sale
- June** Woolaroc Kidsfest, Woolaroc.org
- July** 4th of July Celebrations
- July** Glen Winget American Legion Baseball Tournament
- Aug** Green Country Rodeo, BvilleRoundUpClub.com
- Oct** Downtown Bartlesville Ghostwalk
- Oct** Gathering at the ROC
- Oct** Boofest
- Oct** Downtown Spooktacular
- Oct** Kiddie Park SpookARama, KiddiePark.net
- Oct** Woolaroc Art Show
- Nov** Fantasyland of Lights, FantasyLandofLights.com
- Nov** Woolaroc Wonderland of Lights, Woolaroc.org
- Dec** Christmas in the Ville
- Dec** Bartlesville and Dewey Christmas Parades

Additional Events and Dates:
VisitBartlesville.com

Visit Bartlesville

300 SE Adams Blvd. • Bartlesville, OK 74003 • **918-336-8709**



34,500 copies produced by Green Country Tourism in cooperation with the Oklahoma Tourism and Recreation Department at a cost of \$.44 each.



Cultural Groups

- Bartlesville Art Association: **918-332-8463**
BartlesvilleArtAssociation.org
- Broadway in Bartlesville: **918-337-2787 or 800-618-2787**
Bartlesvillecenter.com
- Bartlesville Symphony: **918-337-2787 or 800-618-2787**
BartlesvilleSymphony.org
- Bartlesville Chorale: **918-337-2787 or 800-618-2787**
BvilleChoralSociety.org
- Bartlesville Community Concert Association:
918-337-2787 or 800-618-2787, BCCAMusic.org
- Bartlesville Civic Ballet: **918-337-2787 or 800-618-2787**
BalletBartlesville.com
- Children's Musical Theatre: **918-336-0558**, CMTOnStage.com
- OKM Music: **918-336-9900**, okmmusic.org
- Theater Bartlesville: **918-336-1900**, TheaterBartlesville.com

